

Road Case

02/05/15

PNE

8 7 6 5 4 3 2 1

D

C

B

A

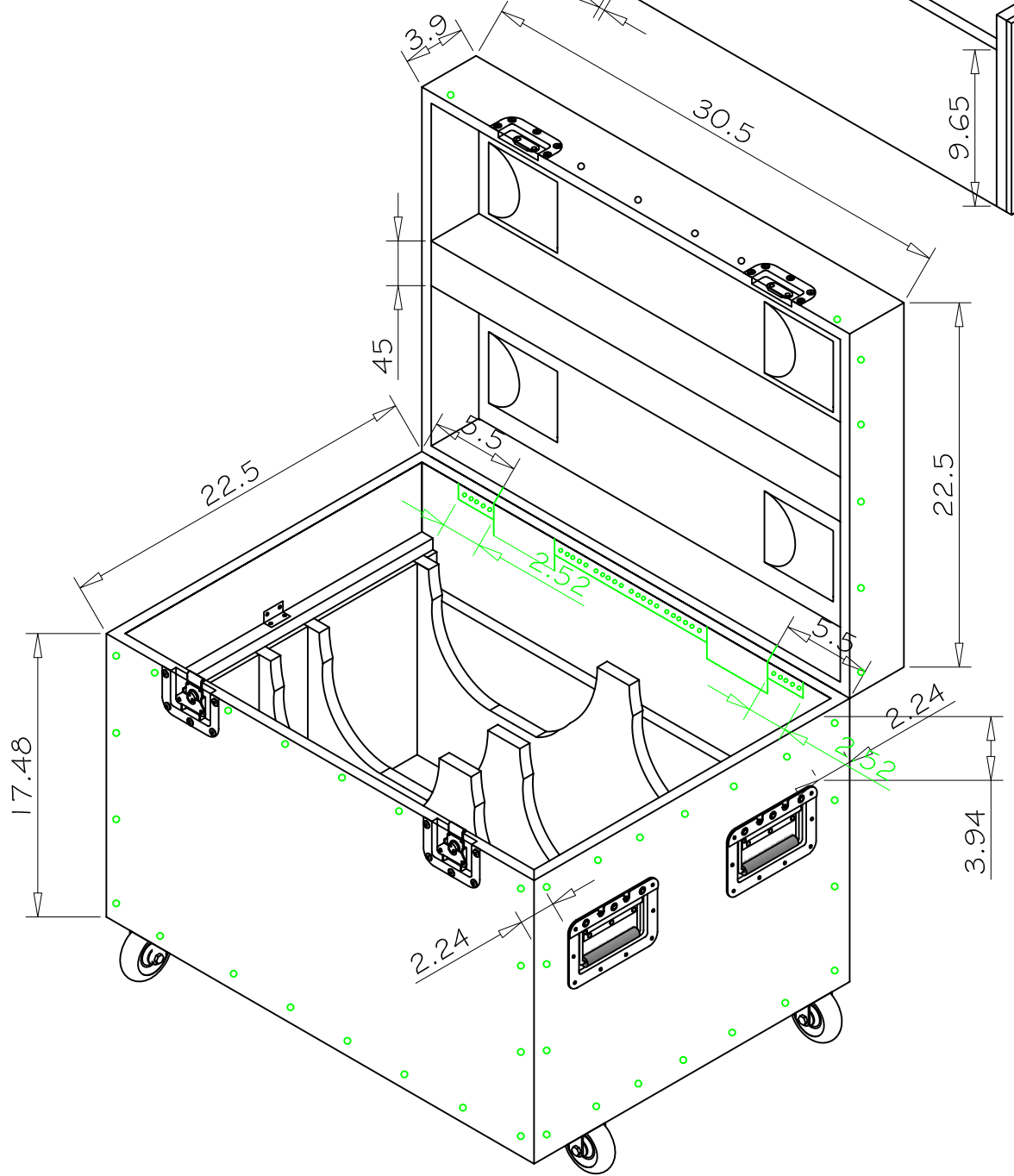
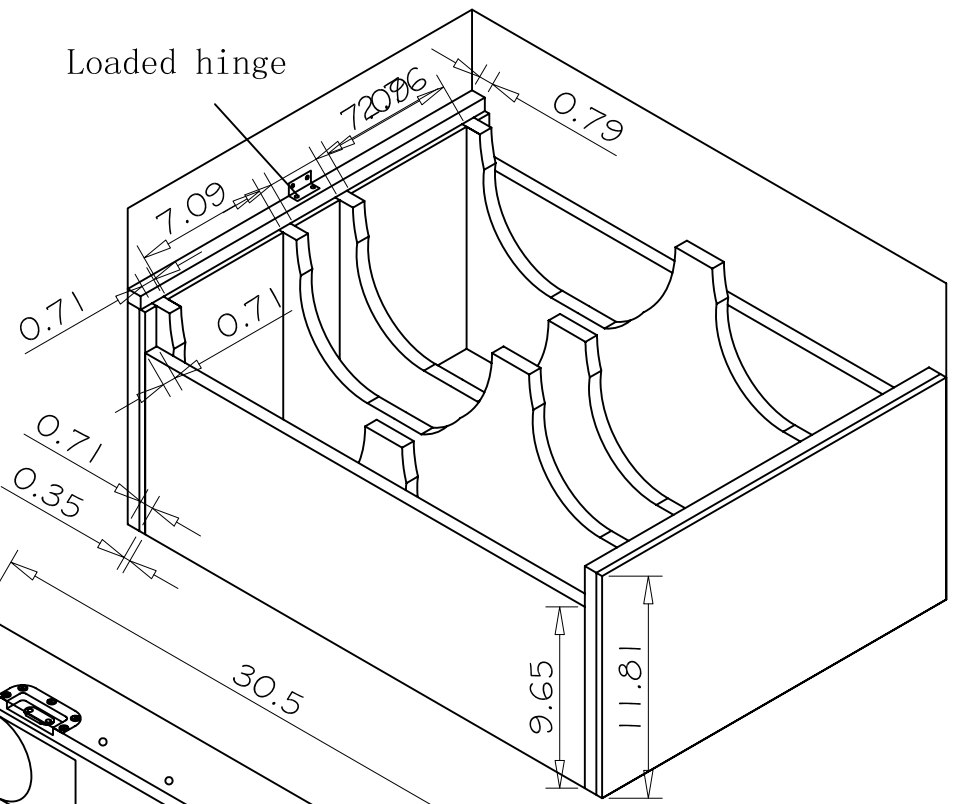
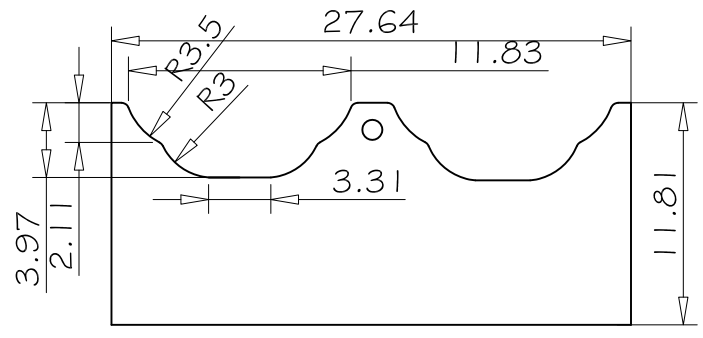
D

C

B

A

REVISIONS				
ZONE	REV	DESCRIPTION	DATE	APPROVED



Motor case

- Note:
1. Foam 5mm EVA
 2. Dist' btw rivets 120 mm
 3. 18mm thick plywood
 4. Panel : ABS board
 5. Wheels 4-inch round four with no brakes
 6. Piano hinge plus 2 backstays.
 7. Piece wheel plate 18mm, rivets to added plate.



Motor Road Case

SIZE B	FSCM NO.	DWG NO.
SCALE 3	NONE	SHEET 1 REV